

RW-7 | **RW-4** LABEL REWINDER | LABEL REWINDER

User's Manual

©2022, DTM Print GmbH. All rights reserved

For the most recent version of this manual please visit dtm-print.eu/manuals

Notices

The information in this document is subject to change without notice. **No warranty of any kind is made with regard to this material, including, but not limited to, the implied warranties of merchantability and fitness for a particular purpose.** No liability is assumed for errors contained herein or for incidental or consequential damages in connection with the furnishing, performance, or use of this material. This document contains proprietary information that is protected by copyright. All rights are reserved. No part of this document may be photocopied, reproduced, or translated into another language without prior written consent.

Trademark Acknowledgements

Windows is a registered trademark of Microsoft Corporation. All other trademarks are the property of their respective owners.

Printing History

Edition 2.1, #200525, Copyright 2019, DTM Print GmbH. All rights reserved.

FCC Compliance Statement

This equipment has been tested and found to comply with the limits for a CLASS A digital device, pursuant to Part 15 of the FCC Rules. These limits are designed to provide reasonable protection against harmful interference when the equipment is operated in a commercial environment. This equipment generates, uses, and can radiate radio frequency energy and, if not installed and used in accordance with the instructions, may cause harmful interference to radio communications. Operation of this equipment in a residential area is likely to cause harmful interference in which case the user will be required to correct the interference at own expense.

Caution

- » Only use with designated power supply adapter model.
- » Changes or modifications not expressly approved by the party responsible for compliance could void the user's authority to operate the equipment.

Safety Instructions

Please read the following instructions carefully

- » Keep the equipment away from humidity.
- » Before you connect the equipment to the power outlet, please check the voltage of the power source.
- » Make sure the rewinder is off before plugging the power connector into the power jack.
- » It is recommended that you connect the rewinder to a surge protector to prevent possible transient over voltage damage.
- » Be careful not to get liquid on the equipment to avoid electrical shock.
- » For safety and warranty reasons, ONLY qualified service personnel should open the equipment.
- » Do not repair or adjust energised equipment under any circumstances.

Table of Contents

Section 1: Box Contents	1
Section 2: Setup Your RW-4/RW-7 Label Rewinder	2
2 A Device Overview	2
2 B Install the Paper Clip and Core Adapters	3
2 C Install and Remove the Removable Label Guide.....	4
Section 3: RW-4/RW-7 Label Rewinder Setup	5
3 A Loading the Label Stock	5
3 B Connection Setup.....	7
3 C Rewinding Modes.....	8
3 D Speed Adjustments.....	9
3 E Motor Fixed Speed Mode.....	10
Section 4: Setup as Label Unwinder	11
4 A Setup for Printers with Loop Sensor and Driver Setting (e.g. Primera LX2000e).....	11
4 B Setup for Printers without Loop Sensor (e.g. DTM FX510e, Primera LX500e)	12
4 C Full Production Mode	13
Section 5: Troubleshooting and Maintenance	14
5 A Status of the Winder	14
5 B Label Roll is Full.....	15
5 C Sensing Error.....	16
5 D Idle Load.....	17
5 E Technical Support	18
Section 6: Product Specifications	19

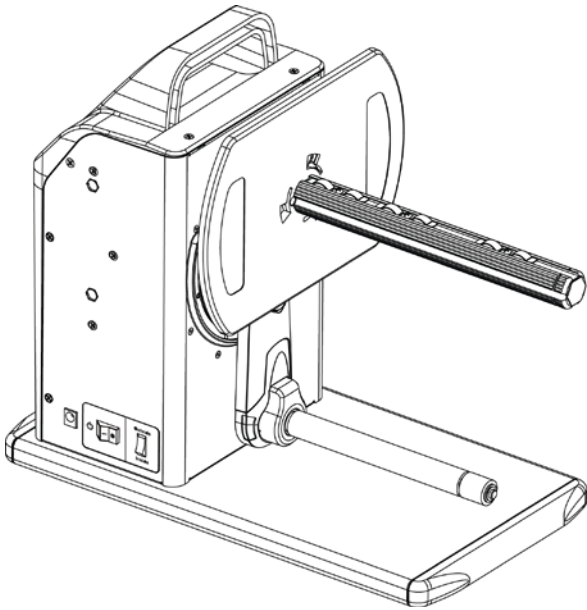


Section 1: Box Contents

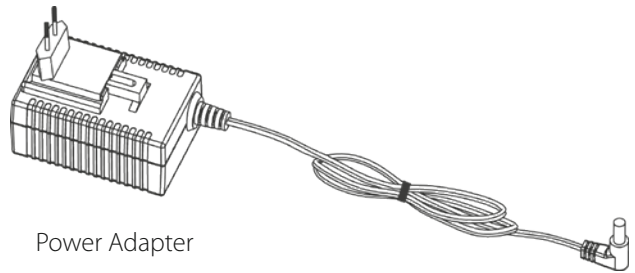
Please check that all of the following items are included with your printer.

- » RW-7/RW-4 Label Rewinder / UW-7 Label Unwinder
- » Power Adapter
- » Paper Clip
- » 38 mm, 38.1 mm (1.5"), 50.8 mm (2") and 76.2 mm (3") Adapter
- » Label Guide

Save the carton and packaging materials. They will come in handy when transporting the printer.

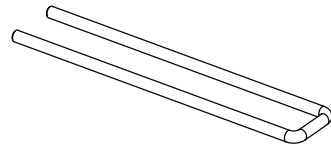


RW-7/RW-4 Label Rewinder



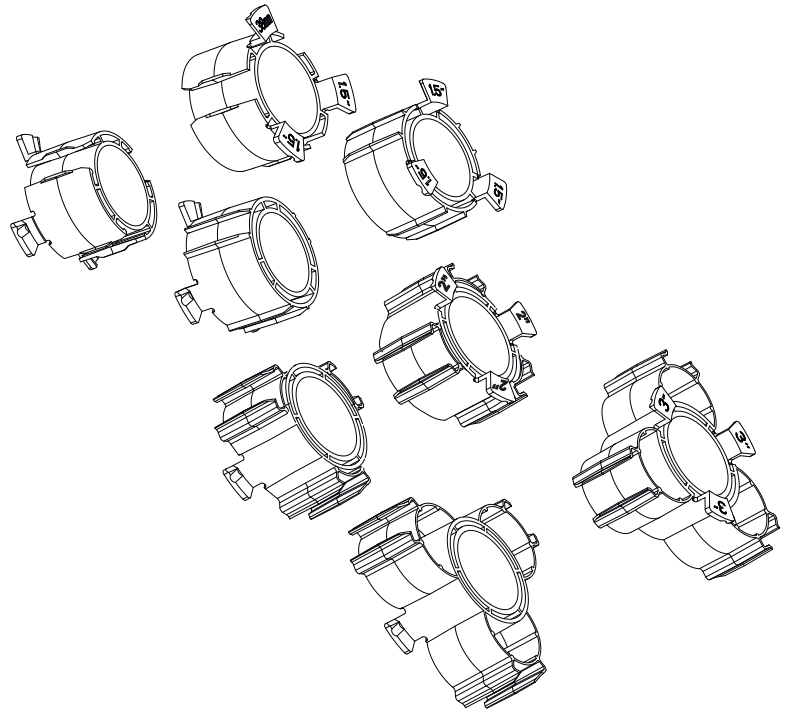
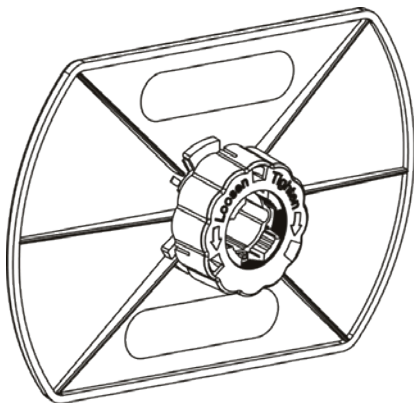
Power Adapter

Paper Clip



38 mm, 38.1 mm (1.5"), 50.8 mm (2")
and 76.2 mm (3") Adapter

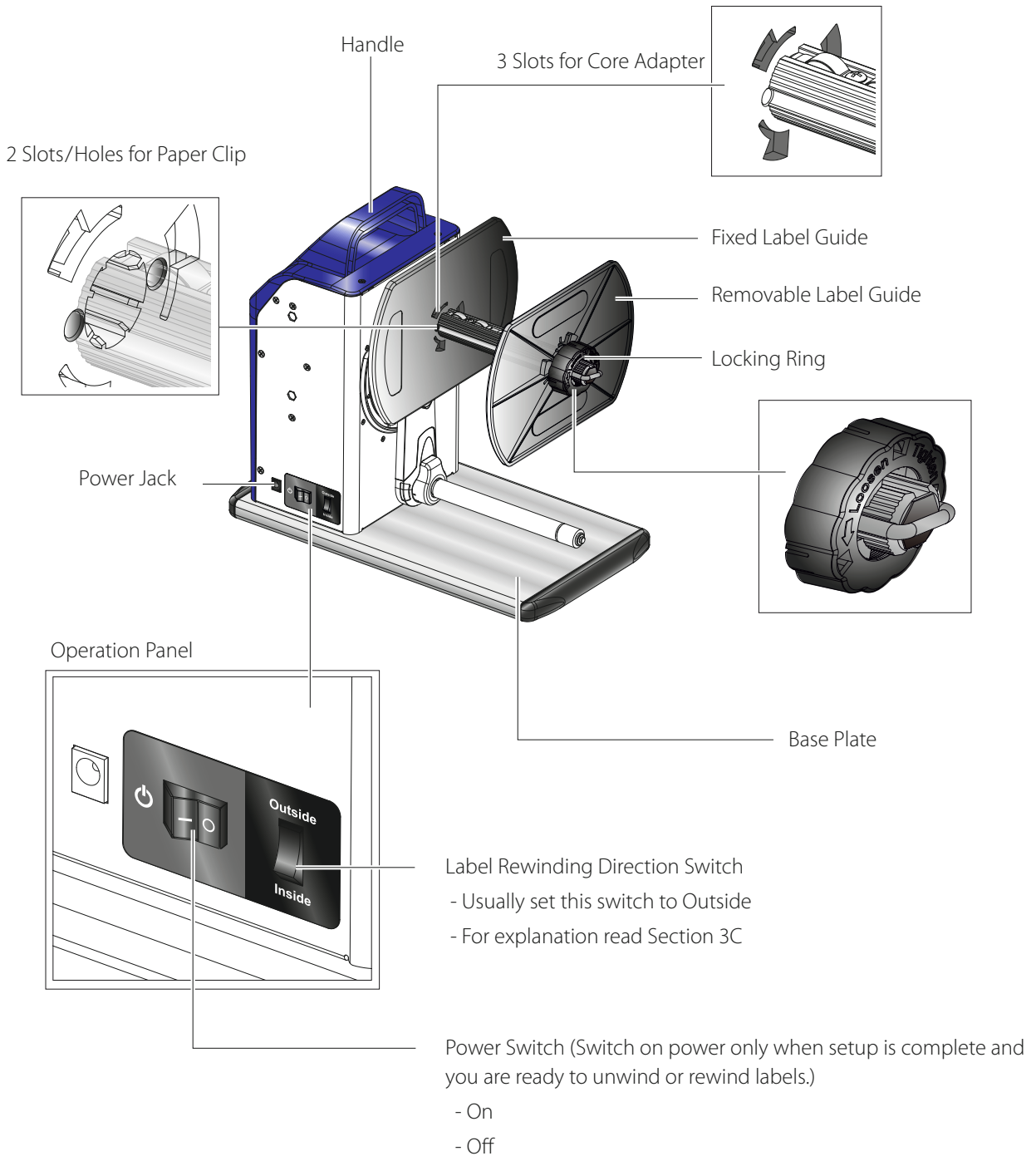
Label Guide



Section 2: Setup

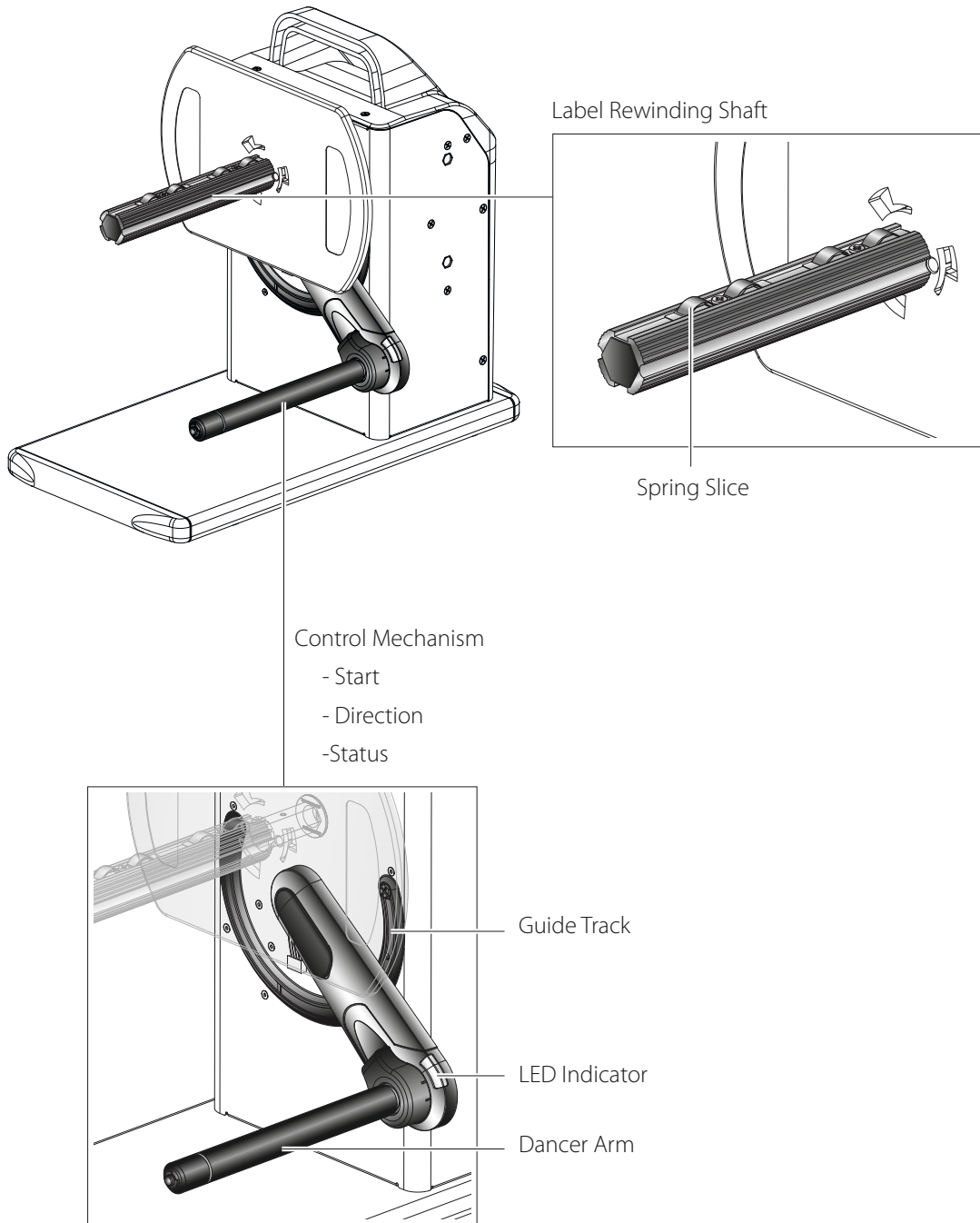
2 A Device Overview

Front View



Note: Your model has LED indicator lights at the bottom of your dancer arm. The procedures described in this manual will not change if these LED lights are present.

Rear View



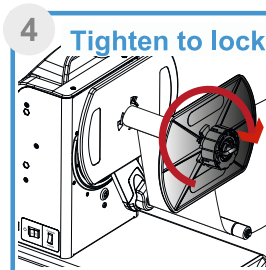
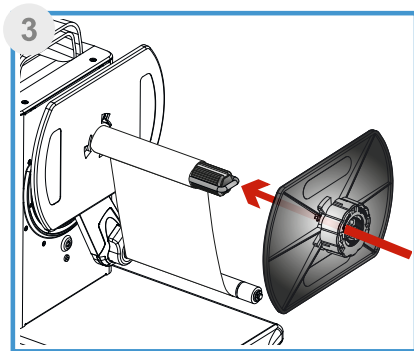
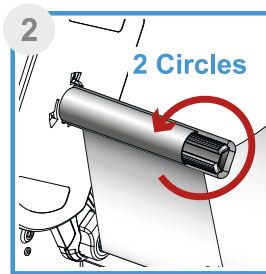
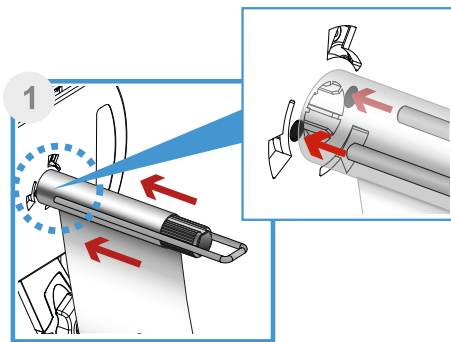
Note: Make sure your dancer arm is always clean and free of dirt or glue particles



2 B Install the Paper Clip and Core Adapters

Install the Paper Clip

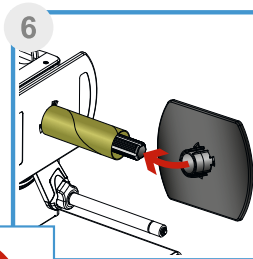
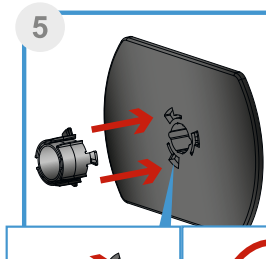
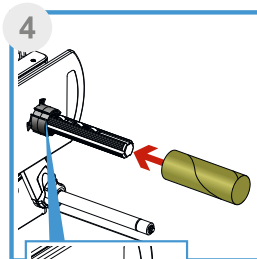
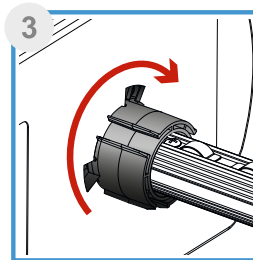
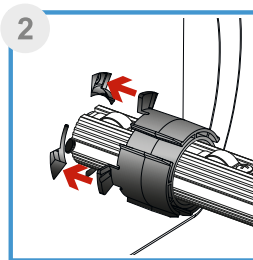
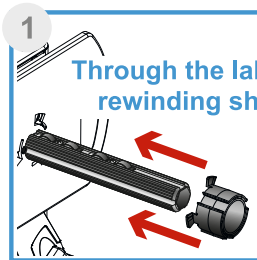
If you don't have an empty core available use the paper clip. It will rewind the labels to a roll with a 1" hole (without a core) after removed from the Label Rewinding Shaft.



1. Wind some of the label material around the Label Rewinding Shaft. Put the Paper Clip upon the label material to hold it and insert it to the two holes in the Fixed Label Guide.
2. Turn the Label Rewinding Shaft manually two turnarounds.
3. Install the Removable Label Guide on the Label Rewinding Shaft.
4. Tighten the Locking Ring to lock the Label Guide accordingly.

Install the Core Adapters

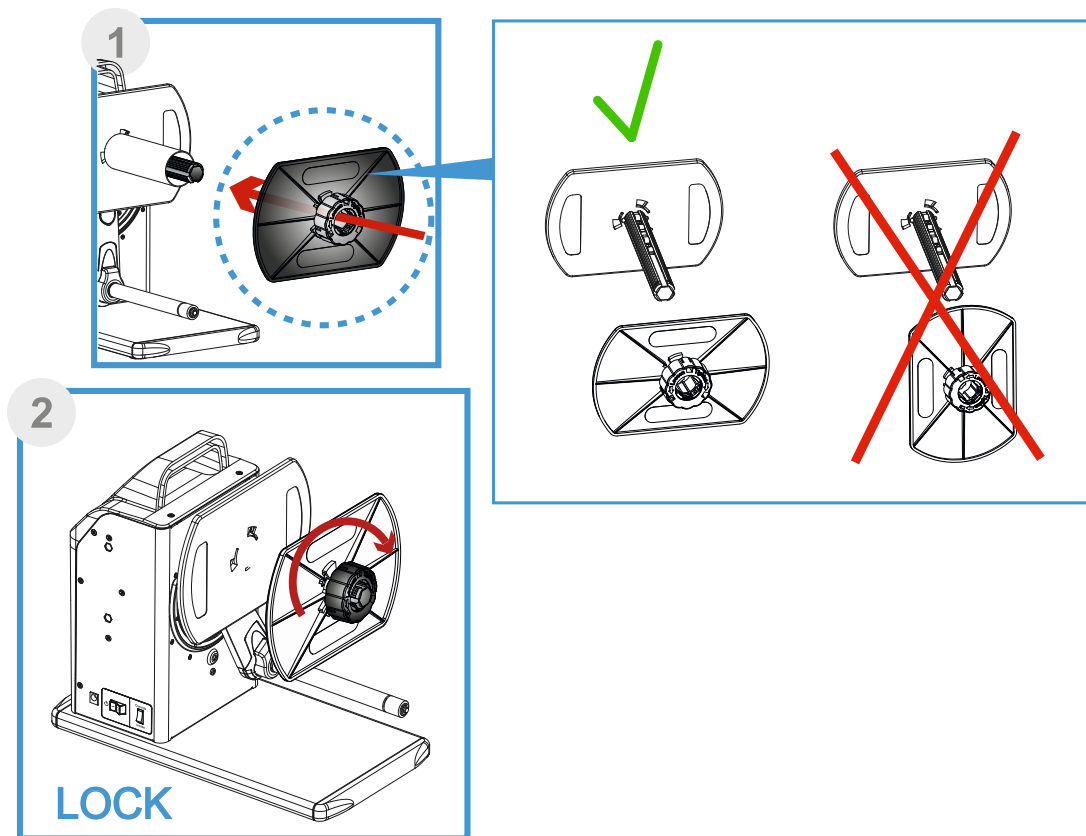
1. Put one of the core adapters over the Label Rewinding Shaft close to the Fixed Label Guide.
2. Insert it to the three slots and fix it turning it clock-wise.



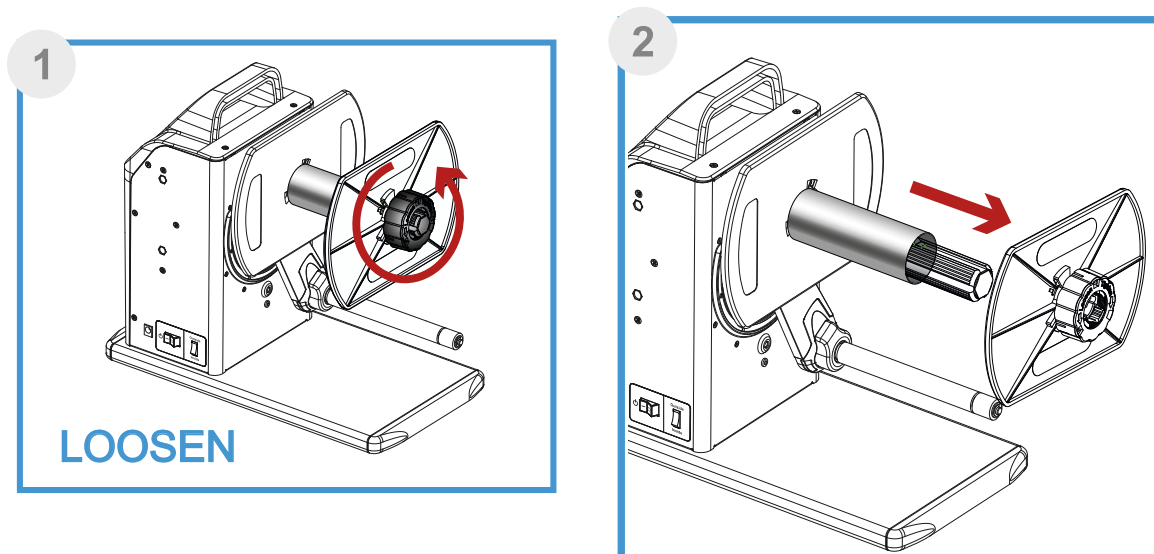
4. Put the core over the Label Rewinding Shaft. Make sure it's close to the Fixed Label Guide.
5. Fix the second core adapter to the Removable Label Guide.
6. Mount the Removable Label Guide on the Label Rewinding Shaft and tighten the Locking Ring to lock it accordingly.

2 C Install and Remove the Removable Label Guide

Install



Remove



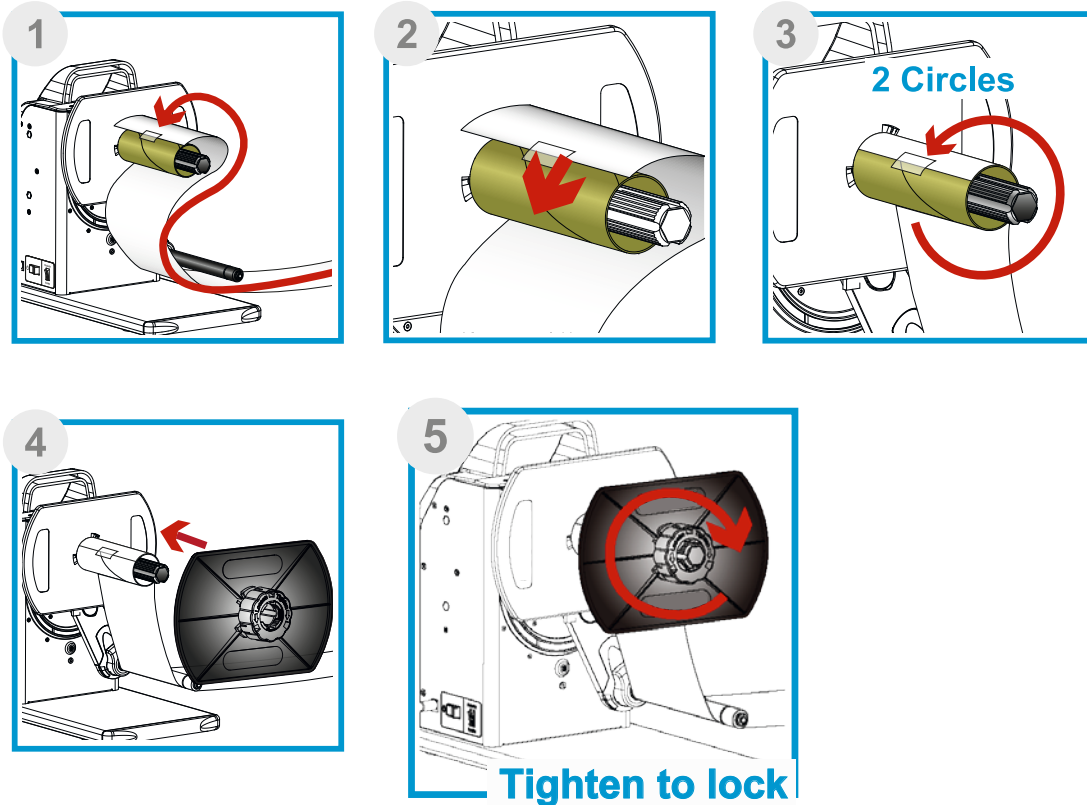
Section 3: RW-7/RW-4 Label Rewinder

3 A Loading the Label Stock

As soon as your first row of labels is printed you want to setup the rewriter correctly.

Note: Please do not power on the Rewinder before all of the following steps are done!

1. Thread the label material through the Dancer Arm.
2. Use some tape or a label to stick the beginning of the label material to the core.
3. Turn the Label Rewinding Shaft two times anti-clock wise to smooth the label material.

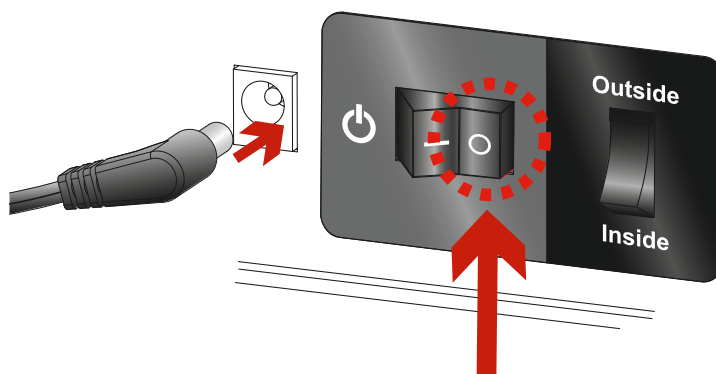


4. Mount the Removable Label Guide on the Label Rewinding Shaft.
5. Tighten the Locking Ring to lock it accordingly

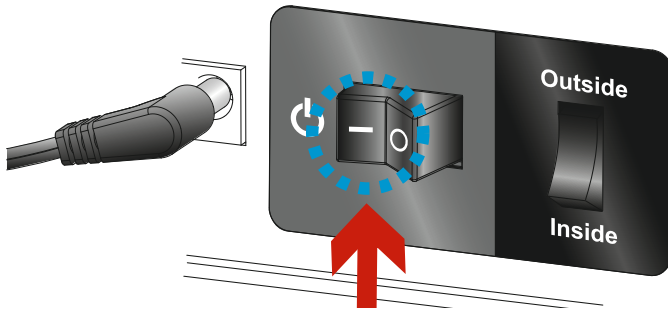
3 B Connection Setup

As soon as your first row of labels is printed you want to setup the rewriter correctly.

Note: Please do not power on the Rewinder before all of the following steps are done!

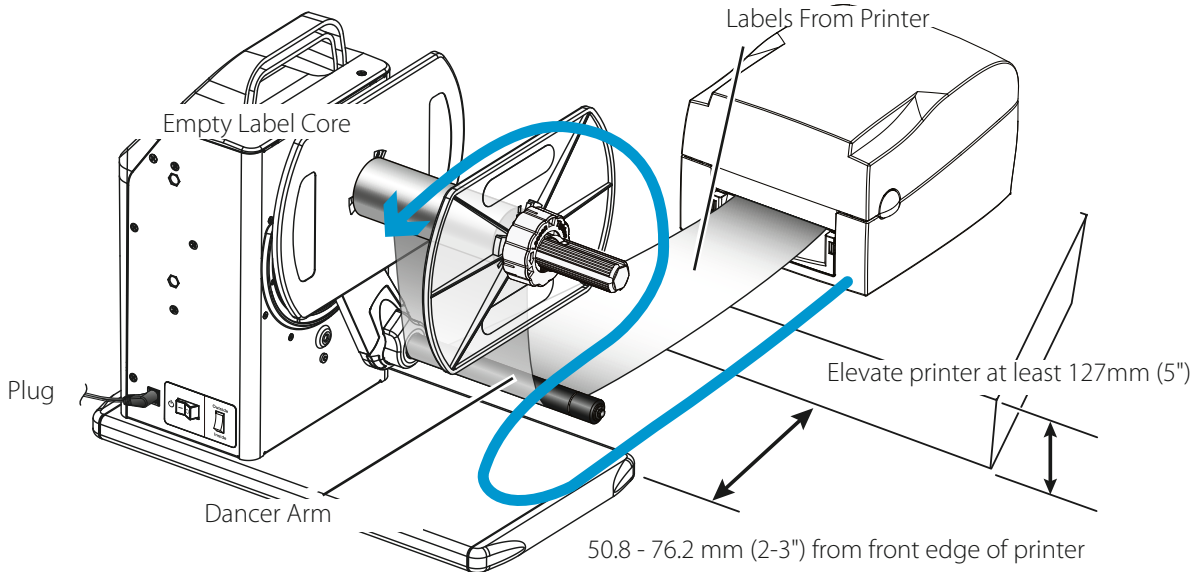


1. Put the power jack in the power slot and connect the plug to the socket of the wall.
2. Switch the Rewinding direction to "Outside"



Connect the RW-7/RW-4 with Desktop Printers

You can use the RW-7/RW-4 with most desktop printers in the market, such as Primera's LX-Series or DTM's FX510e.



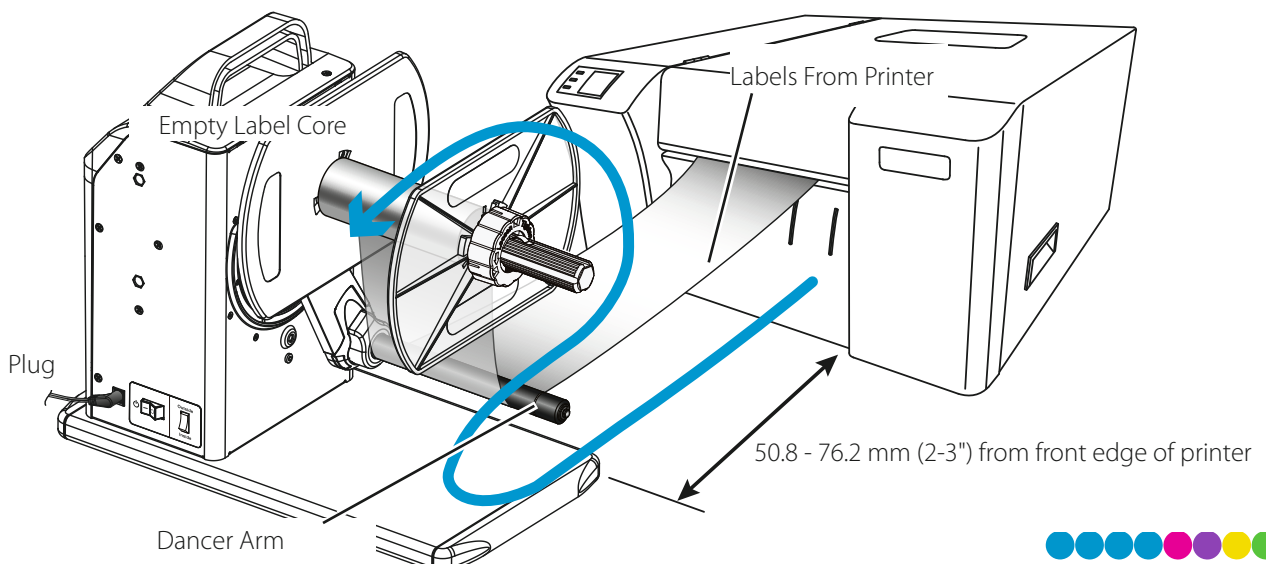
Important Note: When using a label printer with a sharp front edge (for tearing the labels), as with Primera's LX910e or LX2000e, a plastic tear bar guard should be installed in the front. This guard covers the tear bar teeth and allows the labels to pass over the tear bar freely.

This example shows how to setup the RW-7/RW-4 on Primera's LX2000e:

When printing with a printer whose print output is shorter than 15 cm (5.9"), as with DTM FX510e, you may want to elevate the printer approx. 10 cm (3.9") to get a smooth rewinding setup.

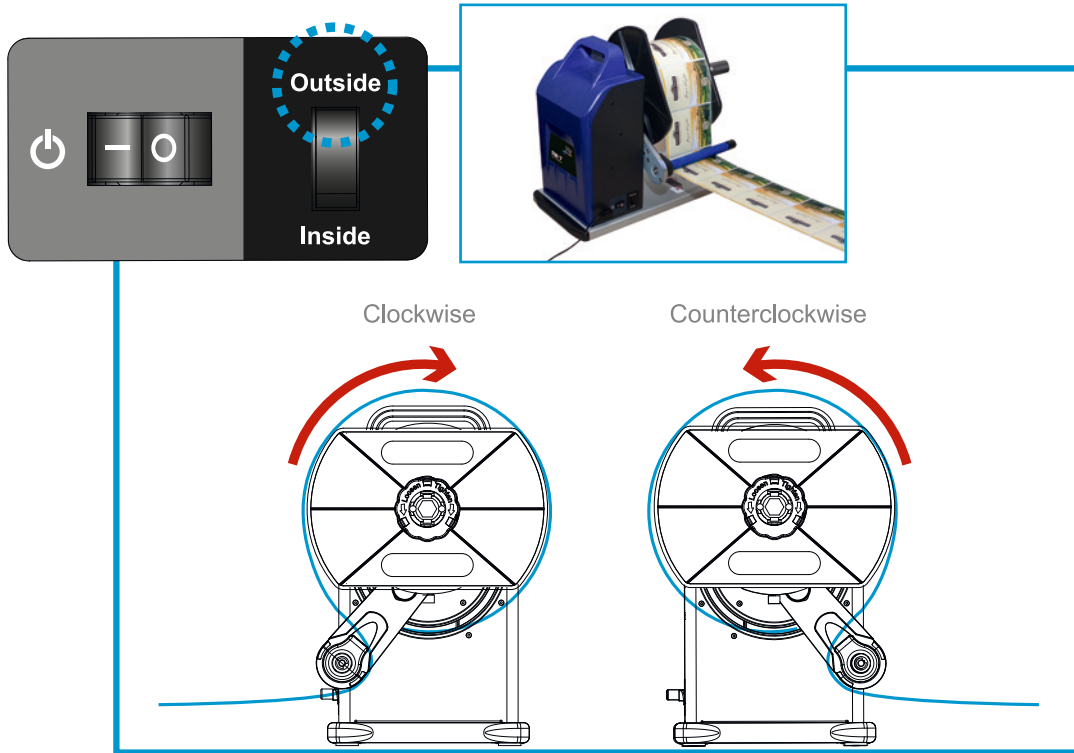
If you loaded the label stock and connected the RW-7/RW-4 successfully to the printer, switch on the power.

The LED indicators will light blue and the RW-7/RW-4 will start rewinding automatically. When the LED indicates pink and doesn't start winding automatically,, move the dancer arm manually towards the printer until the LED lights blue.

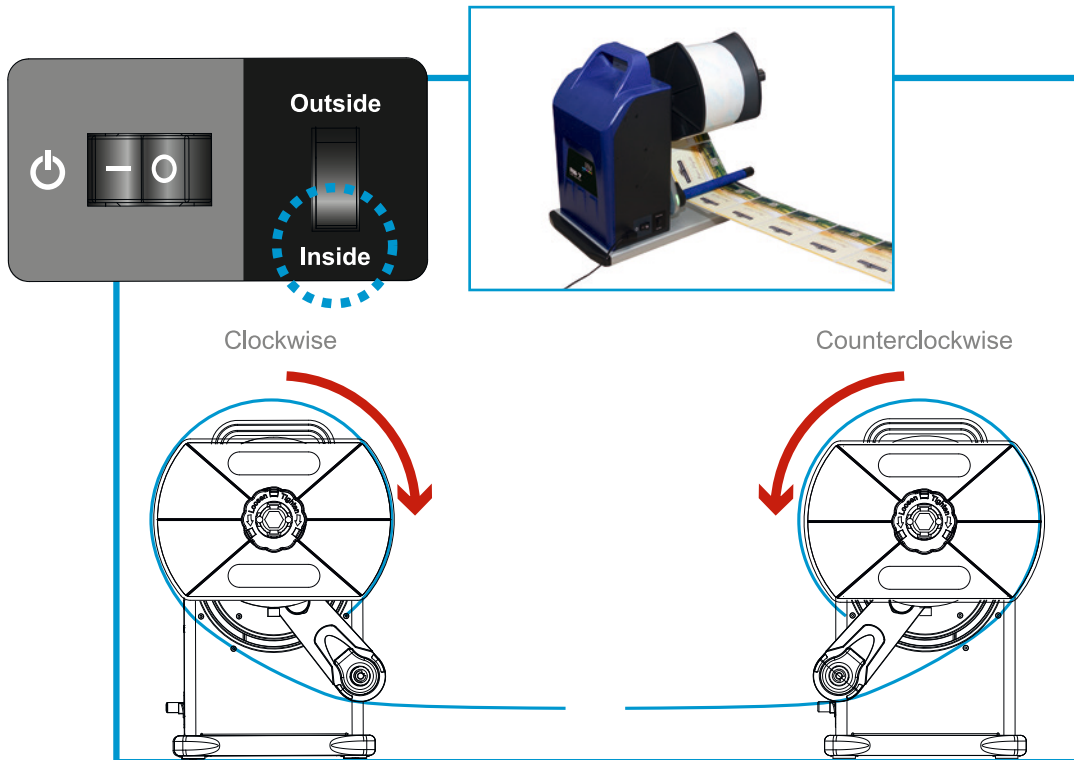


3 C Rewinding Modes

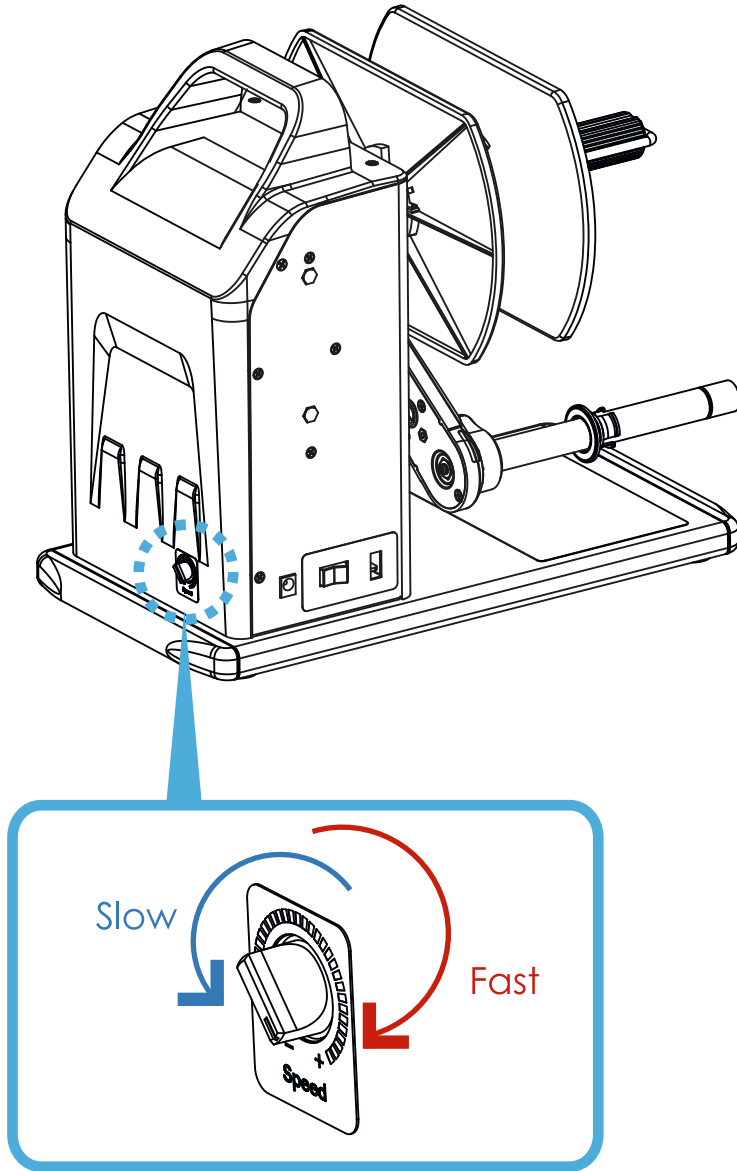
Rewinding Outside



Rewinding Inside



3 D Speed Adjustment

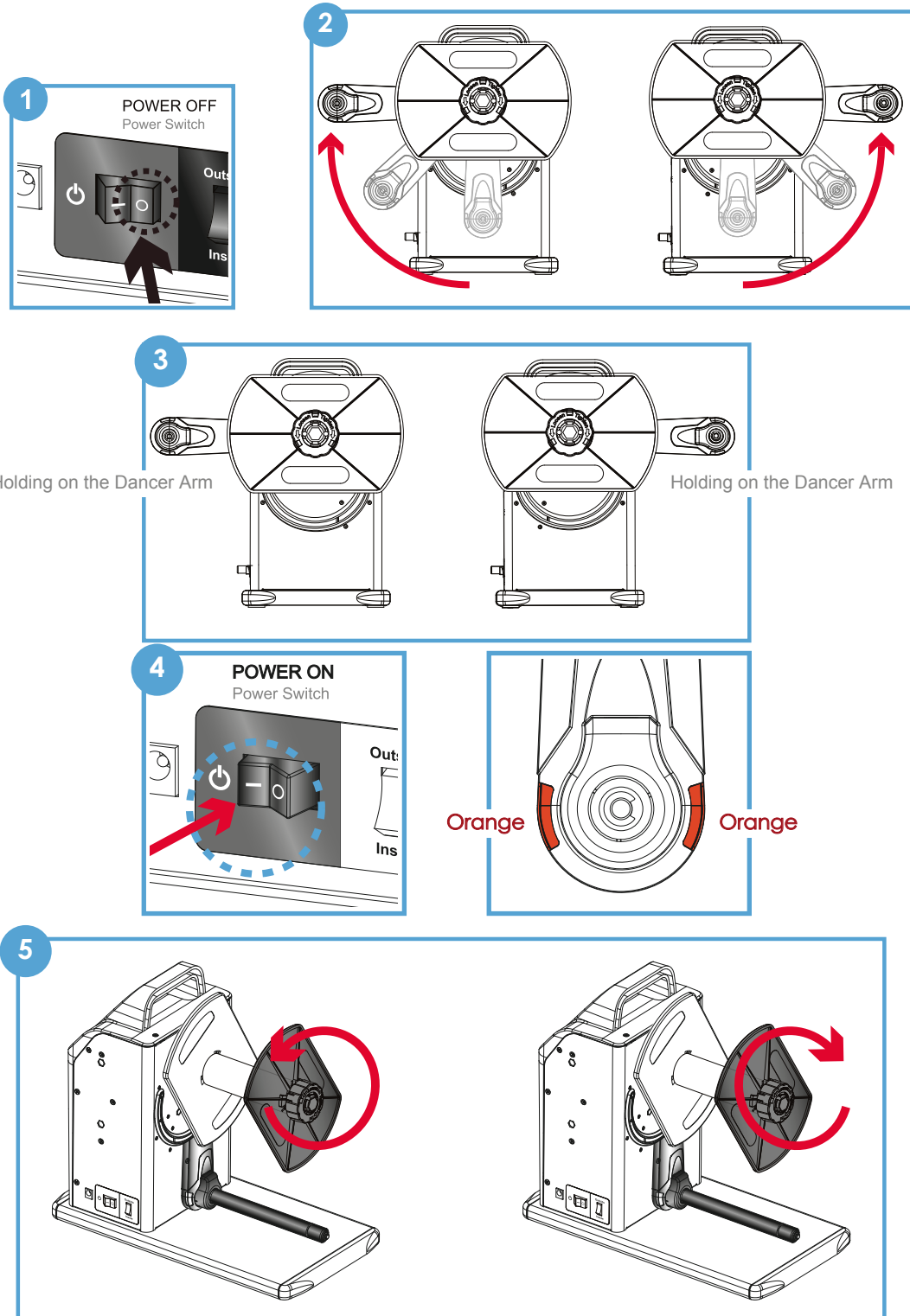


3 E Motor Fixed Speed Mode

Rewinding Outside

To Set up:

1. Make sure the power is switched off.
2. Place the Dancer Arm at its highest point on either side of the rewinder.
3. Turn on the power while holding on the Dancer Arm.
Once the power is on, an orange light should light up and that will bring the rewinder into the "Motor Fixed Speed Mode."
4. Release the Dancer Arm and the rewinder will be rewinding at a fix speed.
5. To stop, switch off the power.



Section 4: Setup as Label Unwinder

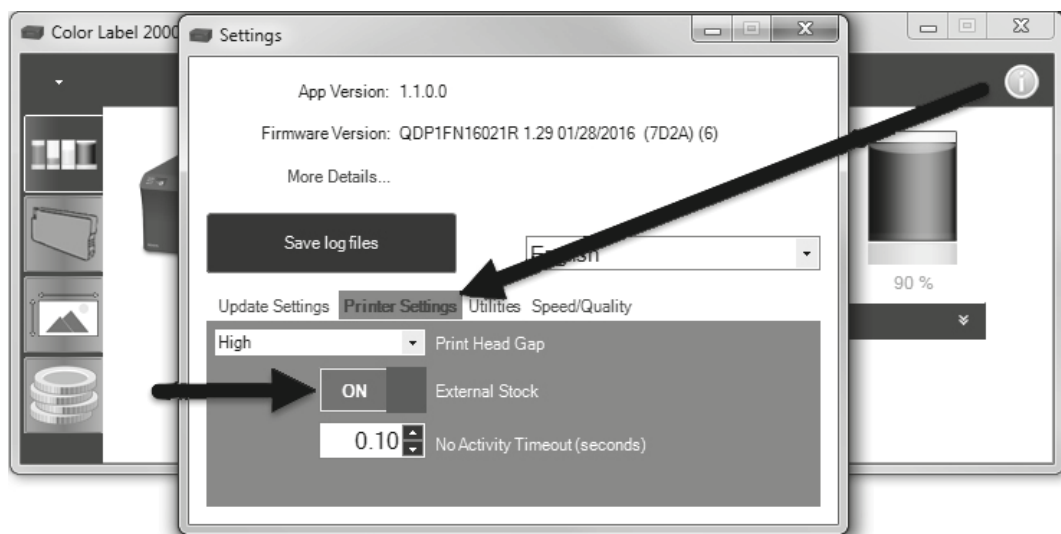
Each RW-4 and RW-7 can be used as an Label Unwinder, too.

Some printers have an integrated loop sensor to make sure the supply roll is always fed in without interruption. Some of these printers offer a setting for external stock in the printer driver or status monitor (like Primera's LX2000e), others need something like a sheet of paper underneath the roll arm to cover and therefore deactivate the loop sensor (like Primera's LX900e), others don't use an internal loop sensor (like DTM's FX510e or Primera's LX500e) so there's no setting you need to care about.

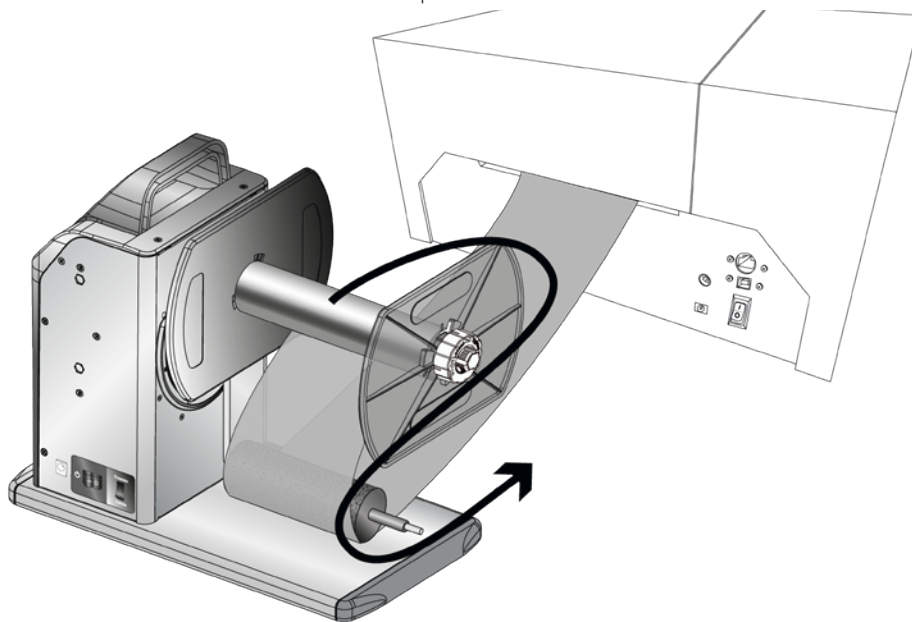
4 A Setup for Printers with Loop Sensor and Driver Setting (Primera LX2000e)

The driver settings shown in the following examples are with Primera's LX2000e. Depending on the printer you use this setting might appear somewhere else.

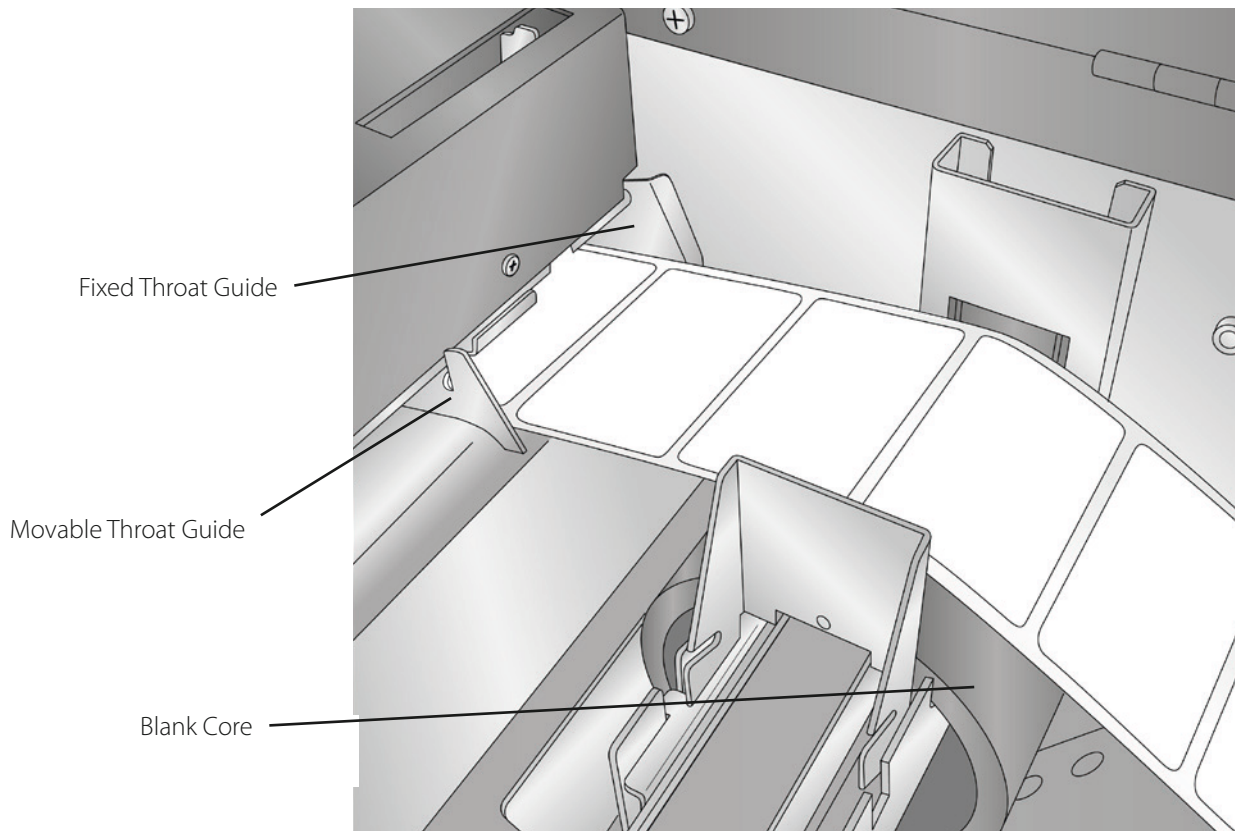
1. Open the Status Monitor. Click on the info "i" icon in the upper right corner. Click on the Printer Settings Tab. Set "External Stock" to "ON".



2. Load the label stock as shown. Feed the stock through the opening in the back of the printer. The Winder should be as close to the printer as possible without causing interference with the dancer arm. Manually move the dancer arm up and down to ensure that it will not touch the printer.



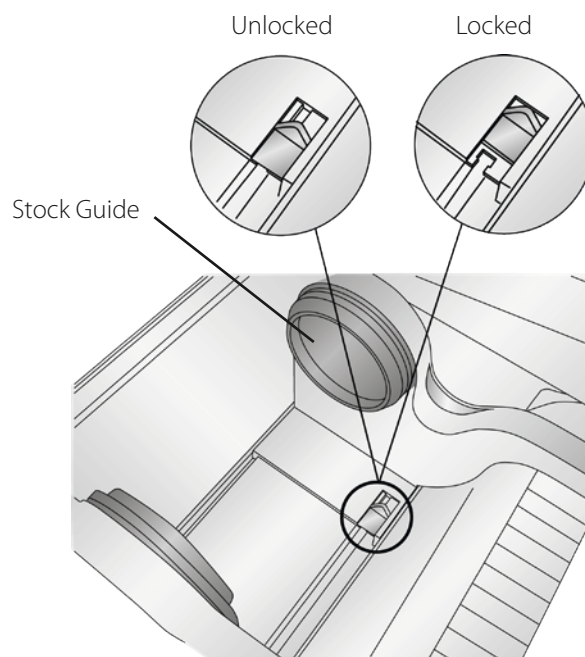
3. Open the Cover. Install an empty core in the LX2000e which is equal to or greater than the width of your label stock. Feed the stock into the printer between the Fixed Throat Guide and the Movable Throat Guide.



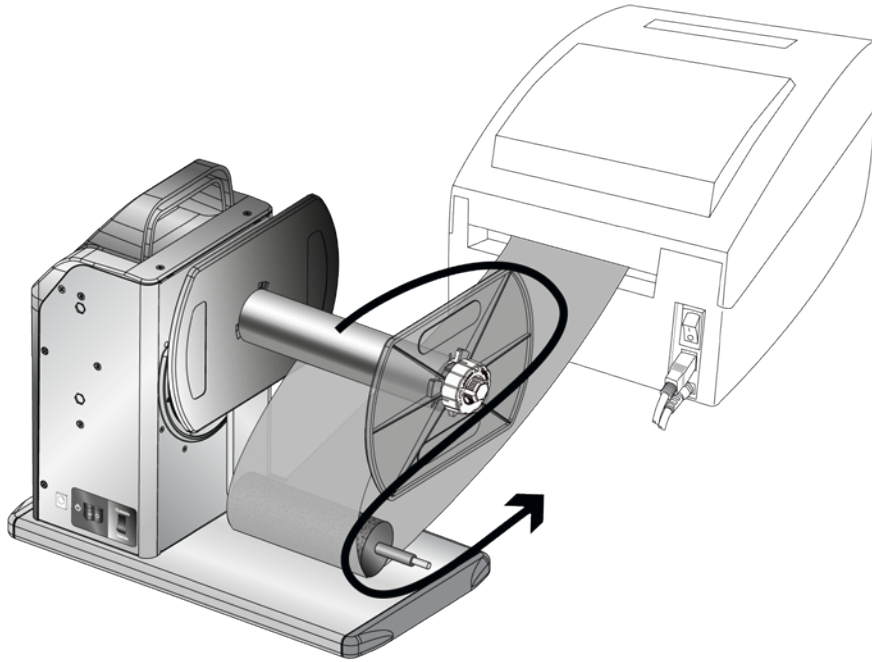
4 B Setup for Printers without Loop Sensor (e.g. DTM FX510e, Primera LX500e)

If your printer is using a fixed stock guide in the back such as Primera's LX500e, follow step 1. When using a printer that has no fixed stock guide in the back such as DTM's FX510e, follow step 2.

1. Open the Cover. Load an empty core the same width as the media to be used or move the Stock Guide to the widest position. Push the switch to lock the guide in position.



2. Load the label stock as shown. Feed the stock through the opening in the back of the printer. The Winder should be as close to the printer as possible without causing interference with the dancer arm. Manually move the dancer arm up and down to ensure that it will not touch the printer.



4 C Full Production Mode

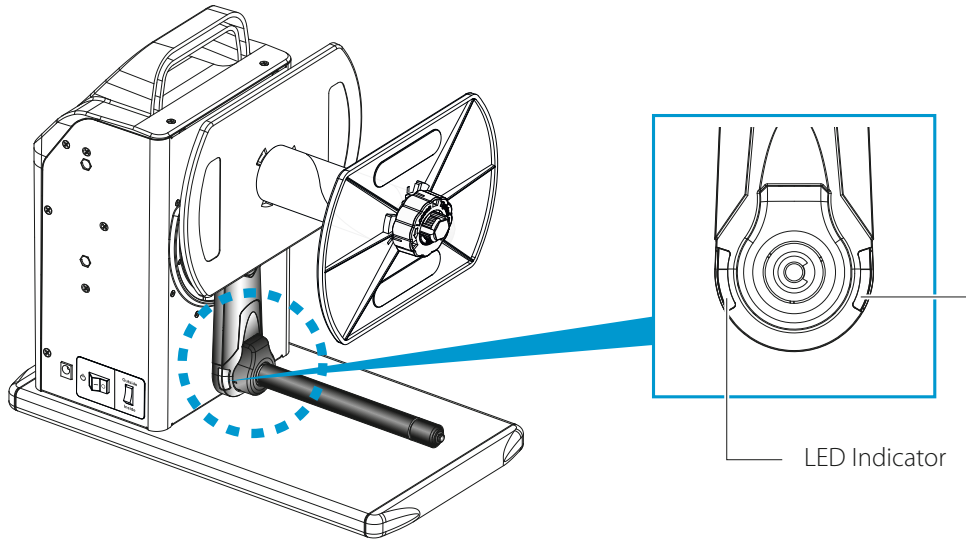
You may use two of the RW-4/RW-7 together to increase your label capacity. In this mode you can unwind and rewind up to 203,2 mm (8") outer diameter rolls. Follow the instructions for your printer in sections 3 and 4 to setup full production mode.

Note: If you want to use the RW-4/RW-7 as Unwinders on printers without external feed slot please ask the manufacturer or local dealer for support.


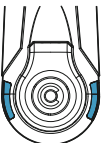
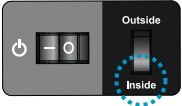
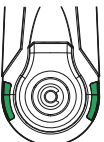
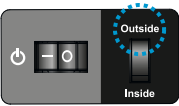
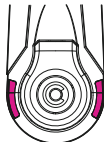



Section 5: Troubleshooting and Maintenance

5 A Status of the Winder

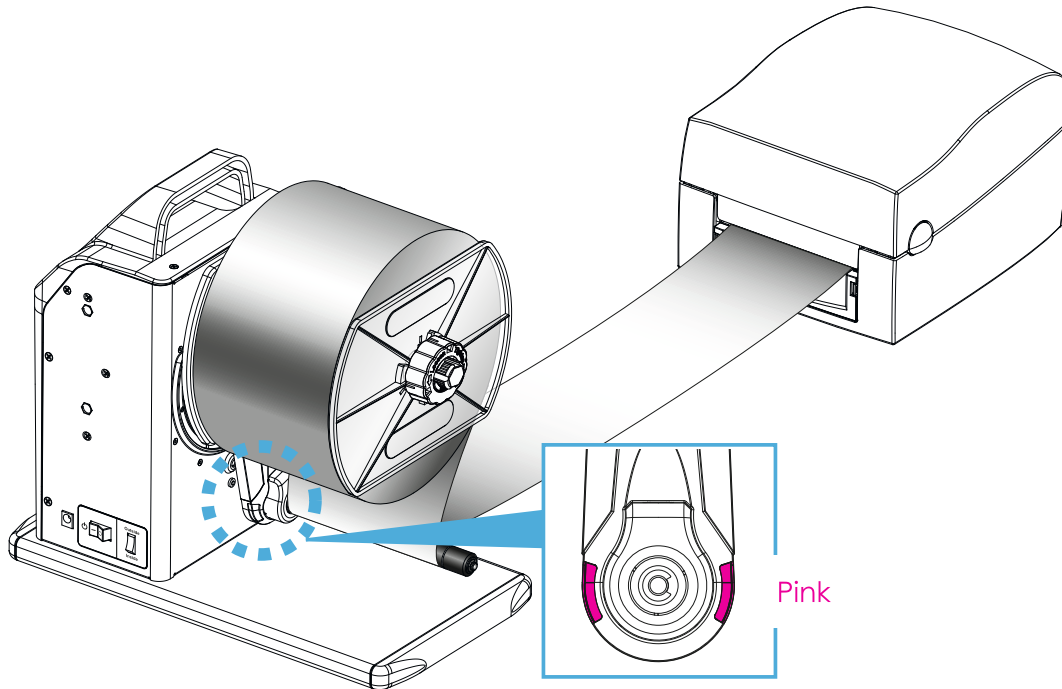


LED Indicator

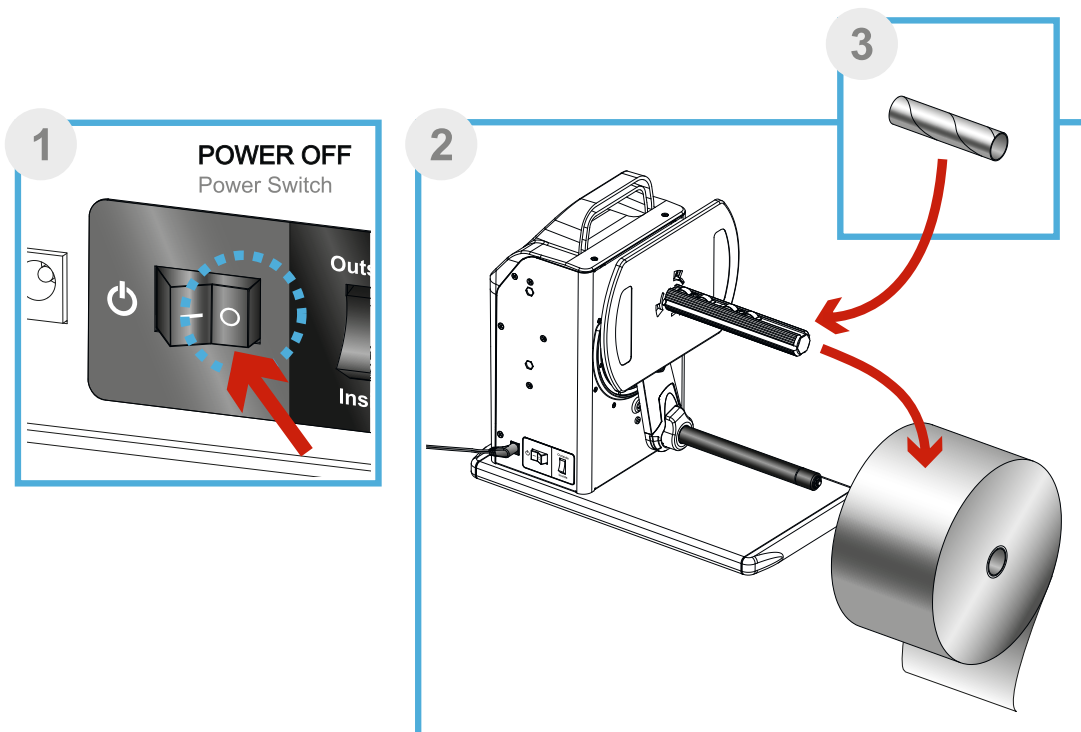
LED Indicator Colour	Status	Troubleshooting
 <p>Flashing in all colours</p>	Power ON	
 <p>Blue</p>	Winding Mode Outside	<p>If you want the winding mode to be inside, switch to inside mode</p> 
 <p>Green</p>	Winding Mode Inside	<p>If you want the winding mode to be outside, switch to outside mode</p> 
 <p>Pink</p>	Error / Alert	Power Off 
	Label roll is full	Refer to Section 5B
	Sensing Error	Refer to Section 5C
	Idle Load	Refer to Section 5D

5 B Label Roll is Full

When the LED Indicator lights pink your label roll may be full.

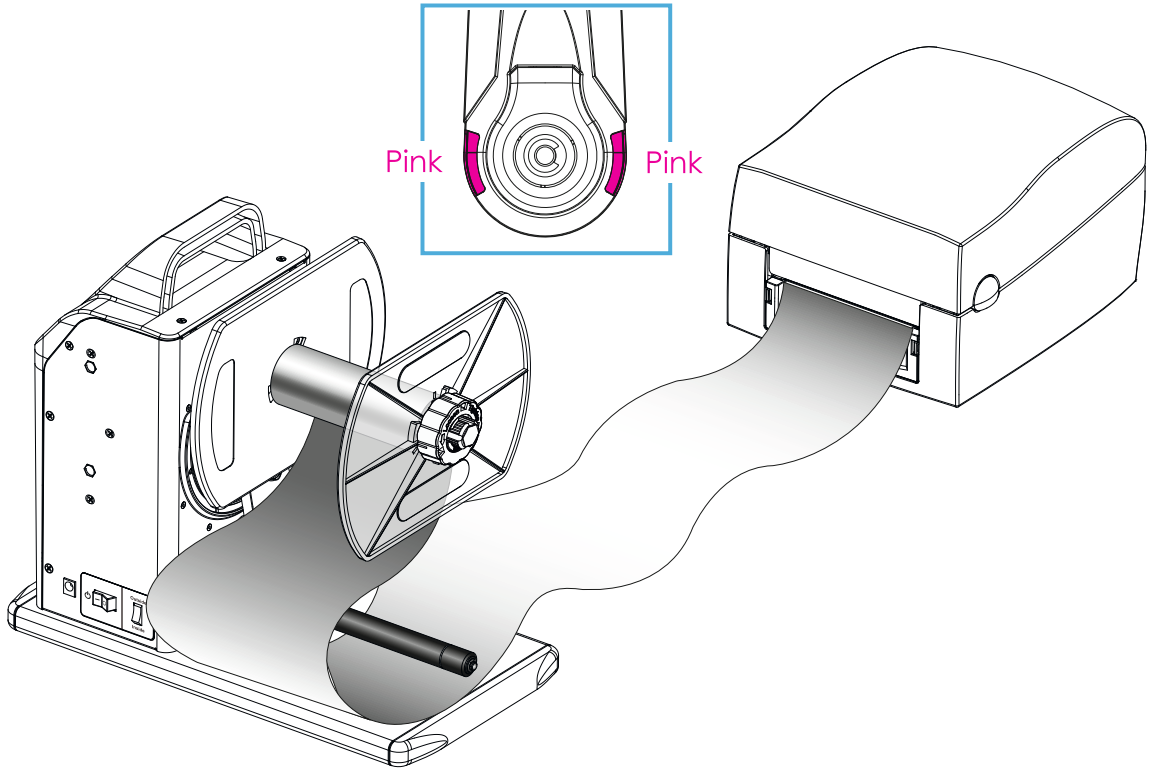


1. Power off the rewinder.
2. Remove the full roll, check instructions in section 2C.
3. Insert empty label core to proceed with rewinding, check instructions of loading label stock in section 3A.
4. When everything is set, power on the rewinder.

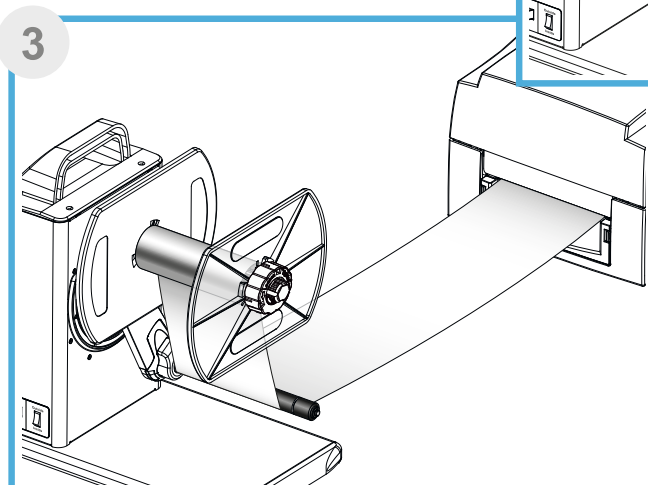
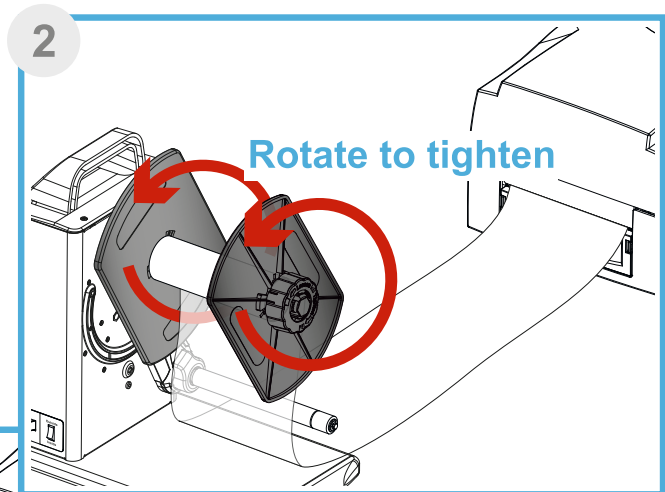
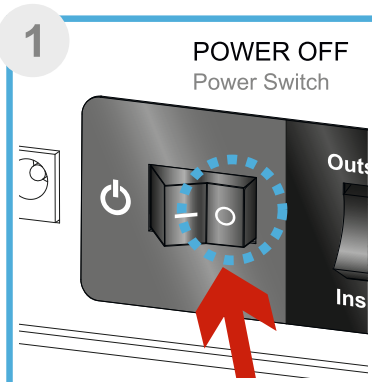


5 C Sensing Error

When the LED Indicator lights pink your dancer arm may not touch the material output.

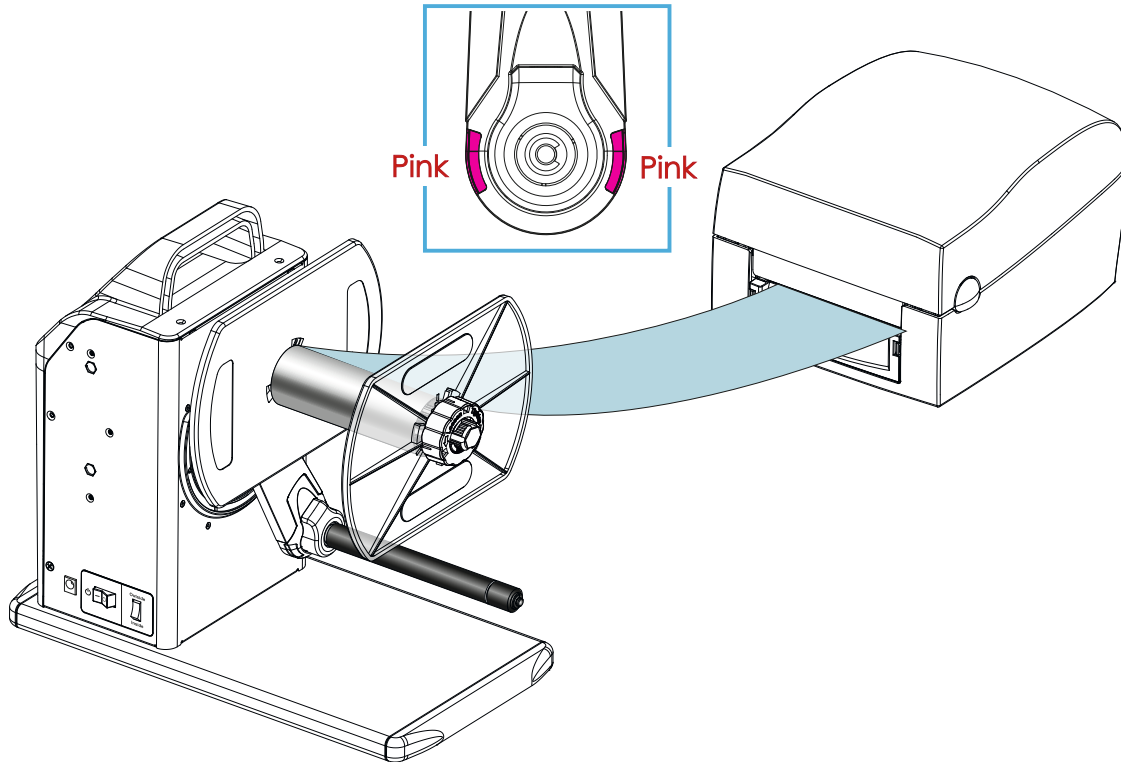


1. Power off the rewinder.
2. Rotate the Label Rewinding Shaft anti-clockwise to tighten the label material.
3. Straighten the label material output so that it touches the dancer arm.
4. When everything is set, power on the rewinder.

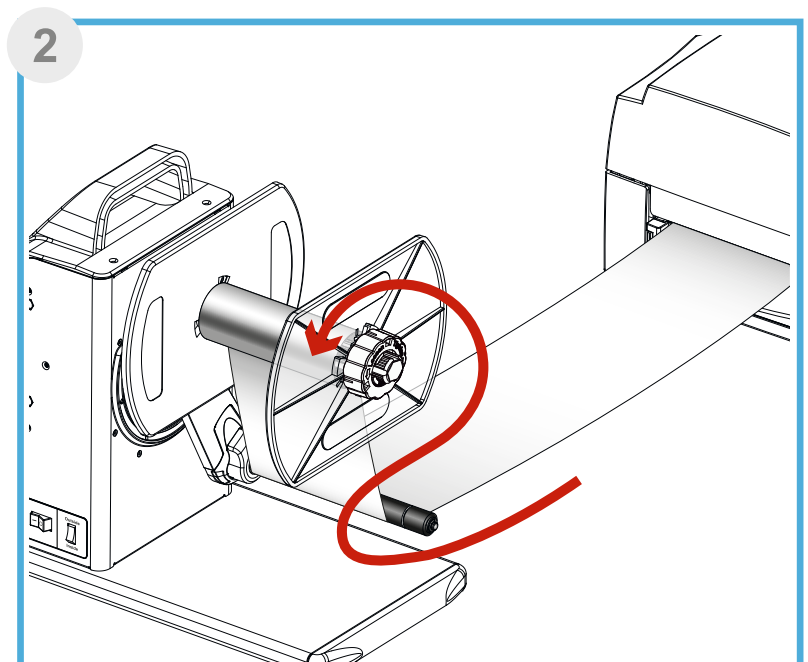
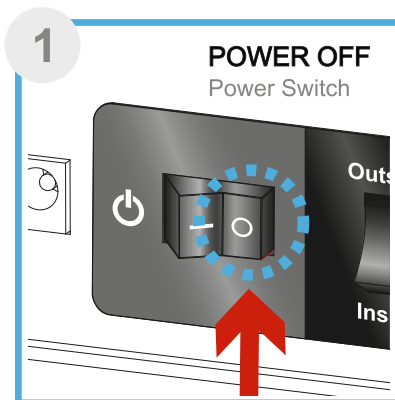


5 D Idle Load

When the LED Indicator lights pink your dancer arm may not have contact with the material output.



1. Power off the rewinder.
2. Feed the material output underneath the dancer arm as shown in the illustration below or in section 3 A of this manual.
3. When everything is set, power on the rewinder.



5 E Technical Support

If you have difficulties in operating your winder, the procedures in this manual should, in most cases, solve the problem. If you still have difficulty, feel free to contact the DTM Print Support Team using one of the methods listed below. This service is free for all DTM Print customers:

Email Support: support@dtm-print.eu

Chat Support: <https://dtm-print.eu> – look for the chat prompt on the lower right

Section 6: Product Specifications

Maximum Roll Width:	RW-7:	178 mm (7")
	RW-4:	120 mm (4.72")
Maximum Roll Diameter:	RW-7:	153 mm (6")
	RW-4:	203.2 mm (8")
Rewind Speed:	Auto mode: 30.48 cm/sec (12"/sec)	
	Fixed mode: Coreless 13.71 cm/sec (5.4"/sec)	
	1" core diameter	
	16 cm/sec (6.3"/sec)	
Core Size:	Coreless, 25.4 mm (1"), 38.1 mm x 50.8 mm (1.5x2"), 76.2 mm (3")	
Label Roll Weight:	5 kg (11 lbs.)	
Rewinding:	Label Inside/Label Outside	
Power Input:	100-240V AC to 24 V DC, 2A, 50/60 Hz	
Weight:	5 kg (11 lbs.)	
Dimensions (WxHxD):	RW-7:	394 x 303 x 180 mm
	RW-4:	349 x 303 x 180 mm
Storage Temperature:	-20°C to 60°C (-4°F to 122°F)	
Humidity:	10% - 85% non-condensing	
Certifications:	CE, RoHS, TÜV, FCC	
Warranty:	36 months (after product registration, for devices purchased in EU/EFTA Countries and United Kingdom)	
Manufacturer:	DTM Print GmbH	

Specifications are subject to change without notice. All company and/or product names are trademarks and/or registered trademarks of their respective owners.



DTM Print GmbH
Mainzer Strasse 131
65187 Wiesbaden
Germany
+49 611 92777-0
support@dtm-print.eu
dtm-print.eu

